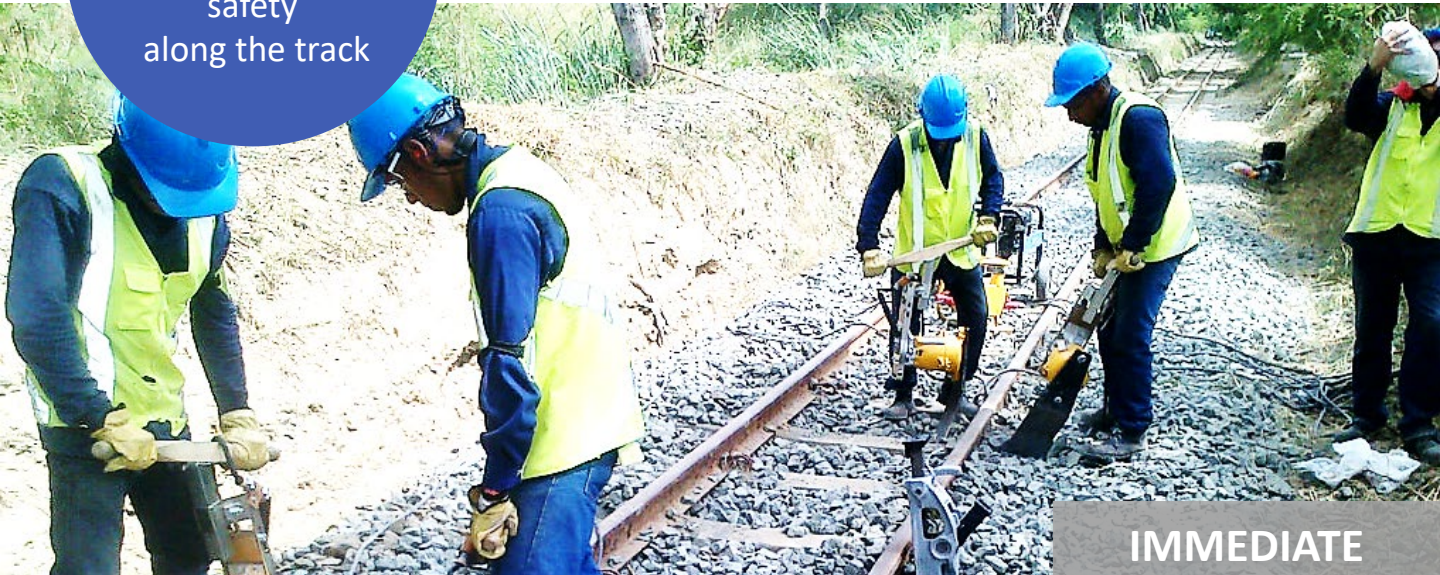


# MobiTAWS

Portable Train Approaching  
Warning Device

## KEY FEATURE

Portable device  
for better  
safety  
along the track



IMMEDIATE  
COST SAVINGS

**MobiTAWS®** is the portable version of **TAWS®**, our autonomous signaling solution aiming at improving safety at critical locations of a rail network, by triggering light and sound alarms when a train approaches. It targets the teams working track maintenance. This portable safety equipment replaces the traditional flag-based manual system. It shortens and improves the safety procedures. Even in “dark territory”, it provides simple communications between work teams, stations and traffic control center, as well as drivers of approaching trains.

## Safety at a Glance

### Main Features

**MobiTAWS®** is composed of :

- An portable signal pole, for each end of maintenance site, equipped with beacons, siren, rechargeable battery, local intelligent logic and communication device(s)
- A central software to monitor in real time the position/speed of each locomotive and the working status of each **MobiTAWS®** pole
- A specific software for the loco driver using his HMI display or a standalone Android device (smartphone/tablet/etc.) to display the status of nearby **MobiTAWS**
- An intelligent GPS tracker on board each locomotive
- Data communications devices (GPRS and satellite modem as standard set up, Tetra and VHF are optional)

## Add Safety to the Track

### Technical Specifications

**MobiTAWS®** pole main components:

#### Circuit board

Microcontroller-based local intelligence with resilient logic firmware

#### Light signal

Class-1 360° Super-LED flashing beacon

#### Sound signal

Adjustable high output sounder

#### SAT modem

Satellite/cellular Communications

#### Battery

Rechargeable 12-volt battery

#### Tripod

Rugged and industry standard

#### Security/Safety

All-weather, self-tracking device, push-buttons for code-protected operation and automatic or manual modes

#### Transportation

Light weight carrying case with handle (15kg without the tripod)

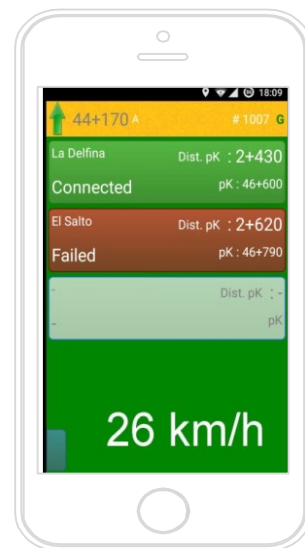


**Mobile, Efficient, Indispensable.**

## Main Characteristics

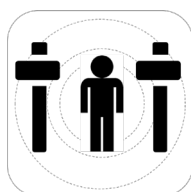
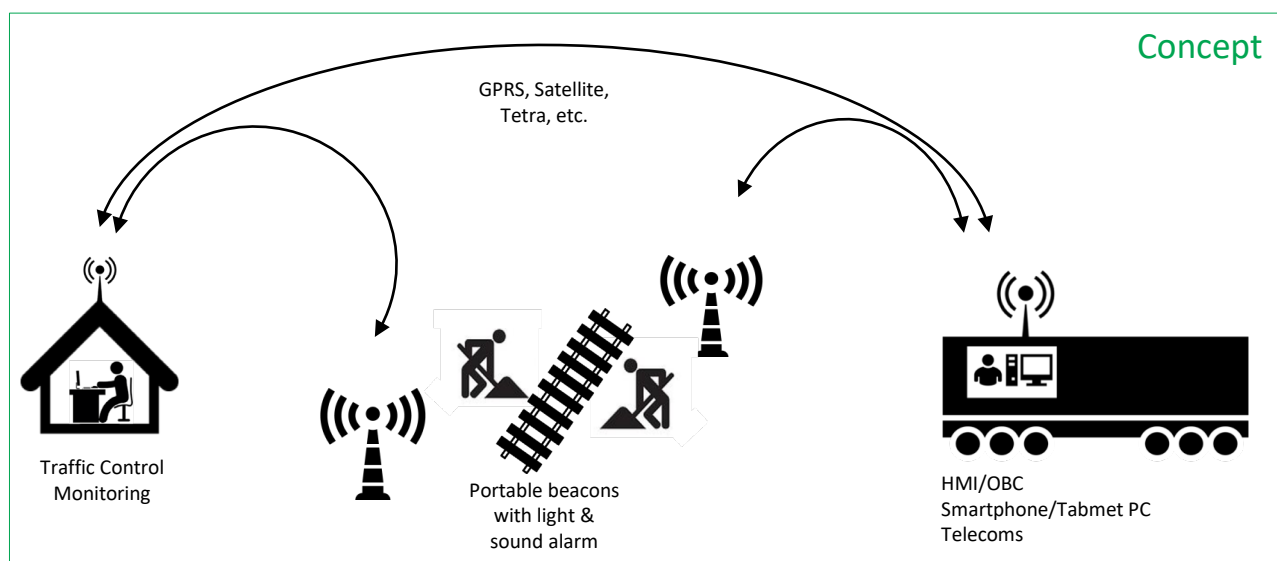
**MobiTAWS®** has been designed to meet challenging operating conditions:

- **State-Of-The-Art** technology
- **Autonomous:** fully automatic operation, self-diagnostic features, no external cables
- **Strategic:** providing critical warning functionality to enhance operational safety
- **Robust:** all-weather, onboard technology
- **Energy-low consumer:** internal battery for 12 hours of operation
- **Innovative:** remote control of local intelligence, individually customizable
- **Connectivity:** works transparently through several telecom solutions: GPRS, Satellite, TETRA, etc. whichever is available and cheaper
- **Compatibility:** may integrate with other operational systems such as:
  - TAWS® fixed signaling
  - ATRAC On-Board® train/voyage management system
  - Train control system providing safe line clearance/authority to proceed
  - Automatic level crossings
  - Motorized rail switches



*Driver Smartphone/HMI showing next MobiTAWS signals and their status*

## EXPERIENCE THE BEST RAILWAY SAFETY DEVICES



## MobiTAWS

Portable Train Approaching Warning Device

**MobiTAWS®** has been designed and is now produced by FUTURE RESOURCES sa, a Belgian company developing innovative and cost effective solutions for small to medium size railways in Africa and South America.

**MobiTAWS®** and **TAWS®** were developed in collaboration with railway engineering partners and railway operators.

For any further information, please contact:

Bernard Defalque at [bdefalque@futerresources.eu](mailto:bdefalque@futerresources.eu),

[www.futerresources.eu](http://www.futerresources.eu)